

Taper Types (m)	Regulatory Speed Limit before Work Begins (km/h)										
	≤ 50	60	70	80	90	100	110	120	130	140	150
Merge Taper Length	35	55	150	150	210	230	250	280			
Lane Shift Taper Length	30	50	80	100	110	120	130	140			
Downstream Taper Length	30	30	30	30	30	30	30	30			
TCO Signal, and Shoulder Taper Length (min. 5 devices)	5	8	15	15	15	15	15	15			
Minimum Tangent Length between Tapers	30	60	160	190	210	230	250	280			
Run-in Length on Centreline	40	50	60	60	70	80	90	100			

Device Spacing (m)	Regulatory Speed Limit before Work Begins (km/h)										
	≤ 50	60	70	80	90	100	110	120	130	140	150
Construction Sign Spacing	A	40	60	80	100	150	150	200	200		
Buffer Space	B	30	40	60	80	110	150	170	200		
Channelizing Device Spacing for Tapers	C	10	10	15	15	15	15	15	15		
Channelizing Device Spacing on Curves and Tangents	D	10	10	30	30	40	40	40	50		

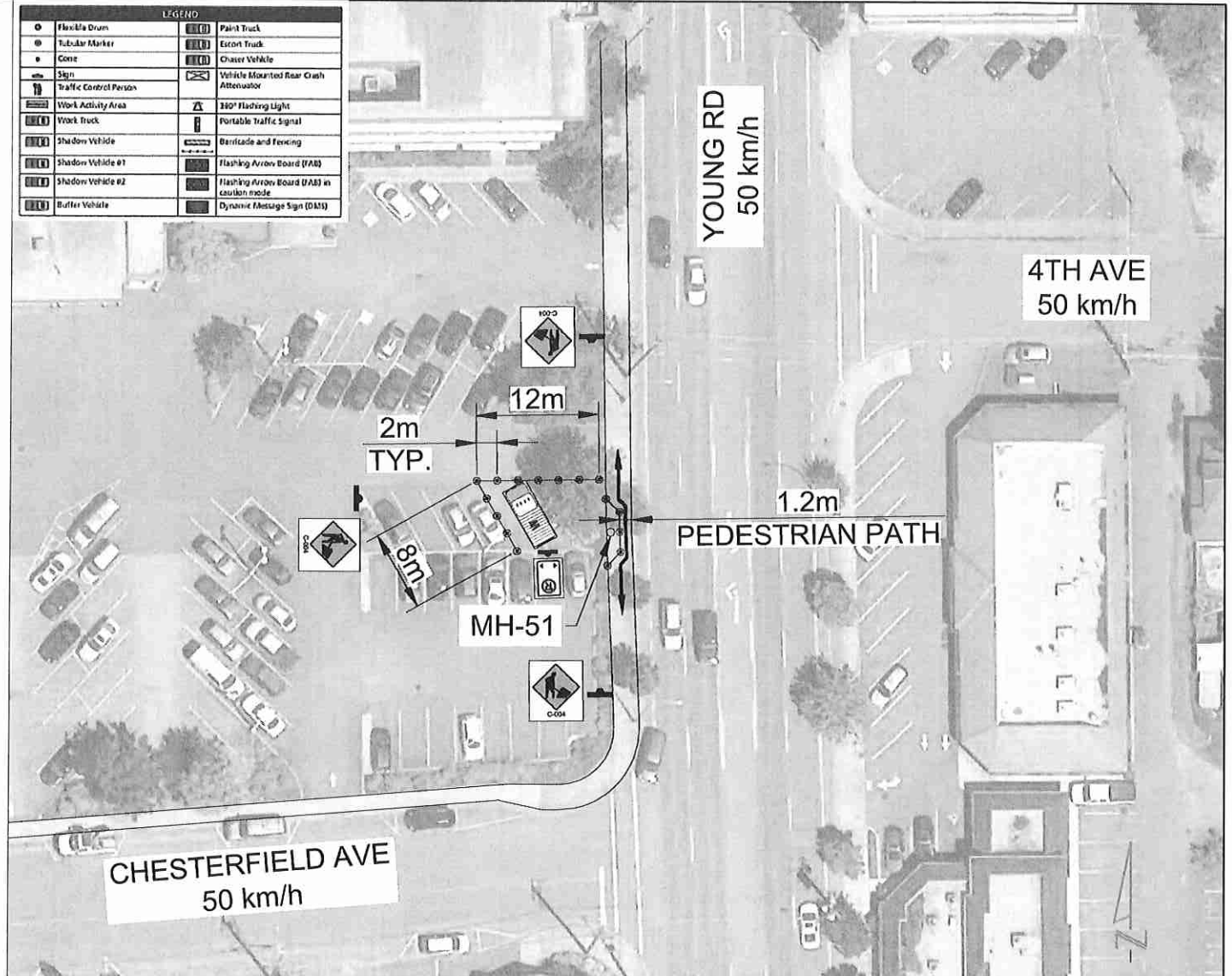
NOTES:

1. THE WORK REQUIRING THE TRAFFIC CONTROL MEASURE INVOLVES THE PLACING AND SPLICING OF FIBER OPTIC CABLE AT MH-51 LOCATED ON THE WEST SIDE OF YOUNG RD (APPROX. 48m SOUTH FROM 4TH AVE). THE DURATION OF USE OF THIS MEASURE WILL BE UNTIL THE WORK IS COMPLETED.
2. LANE CLOSURES ARE AS NOTED IN THIS LAYOUT.
3. TIMING OF THE WORKS WILL BE FROM 8:30AM TO 4:30 PM.
4. LOCATION OF THE WORK ZONE IS AS INDICATED ON THIS PLAN FOR CONSTRUCTION.
5. THE MEASURES SHOWN IN THIS TRAFFIC MANAGEMENT PLAN IS IN ACCORDANCE TO THE "BC TRAFFIC MANAGEMENT MANUAL FOR WORK ON ROADWAYS (2015 INTERIM)". CHANGES TO THIS LAYOUT MAY BE MADE BY THE TRAFFIC CONTROL PERSON IN CHARGE TO REFLECT FIELD CONDITIONS.
6. PRIORITY ACCESS WILL BE GIVEN TO EMERGENCY VEHICLES.
7. ALL DIMENSIONS ARE IN METRES.

CONTACT INFORMATION:

SHANE BELFRY:
778-870-9562

	Fluxile Drum		Paint Truck
	Tubular Marker		Escort Truck
	Cone		Chaser Vehicle
	Sign		Vehicle Mounted Rear Crash Attenuator
	Traffic Control Person		360° Flashing Light
	Work Activity Area		Portable Traffic Signal
	Work Truck		Barrier and Fencing
	Shadow Vehicle		Flashing Arrow Board (FAB)
	Shadow Vehicle #1		Flashing Arrow Board (FAB) in caution mode
	Shadow Vehicle #2		Dynamic Message Sign (DMS)
	Buffer Vehicle		



BC ONE CALL
CALL BEFORE YOU DIG
1 800-474-6886
VANCOUVER AREA
604-267-1840

CONSTRUCTION	PERMIT	DESIGN DL	DR EX
REV. DESCRIPTION	SUBMITTED DATE	04/29/19	SCALE: NTS
REV. DESCRIPTION	PERmit DATE		DATE: 01/FEB/19
REV. DESCRIPTION	PERmit DATE		ASSOCIATED DRAWINGS
REV. DESCRIPTION	APPROVED		
REV. DESCRIPTION	DATE		
REV. DESCRIPTION	AS CONSTRUCTED DATE		
REV. DESCRIPTION	CONTRACTOR		

PROPOSED TRAFFIC CONTROL LAYOUT TO ACCOMMODATE TELECOM CABLE PLACING & SPLICING		SYSTEM NAME:
1.	ON THE WEST SIDE OF YOUNG RD (APPROX. 48m SOUTH FROM 4TH AVE), CH LUMACK, BC	2876312
2.		
3.		
REF		

Taper Types (m)	Regulatory Speed Limit before Work Begins (km/h)										
	≤ 50	60	70	80	90	100	110	120	130	140	150
Merge Taper Length	1/4	35	55	100	150	210	230	250	280		
Lane Shift Taper Length	1/4	30	50	80	100	110	120	130	140		
Downstream Taper Length	1/4	30	30	30	30	30	30	30	30		
TCP, Signal, and Shoulder Taper Length (min. 5' devices)	1/4	5	8	15	15	15	15	15	15		
Minimum Tangent Length between Tapers	1/4	30	60	100	150	210	230	250	280		
Run-in Length on Centreline	1/4	40	50	60	60	70	80	90	100		

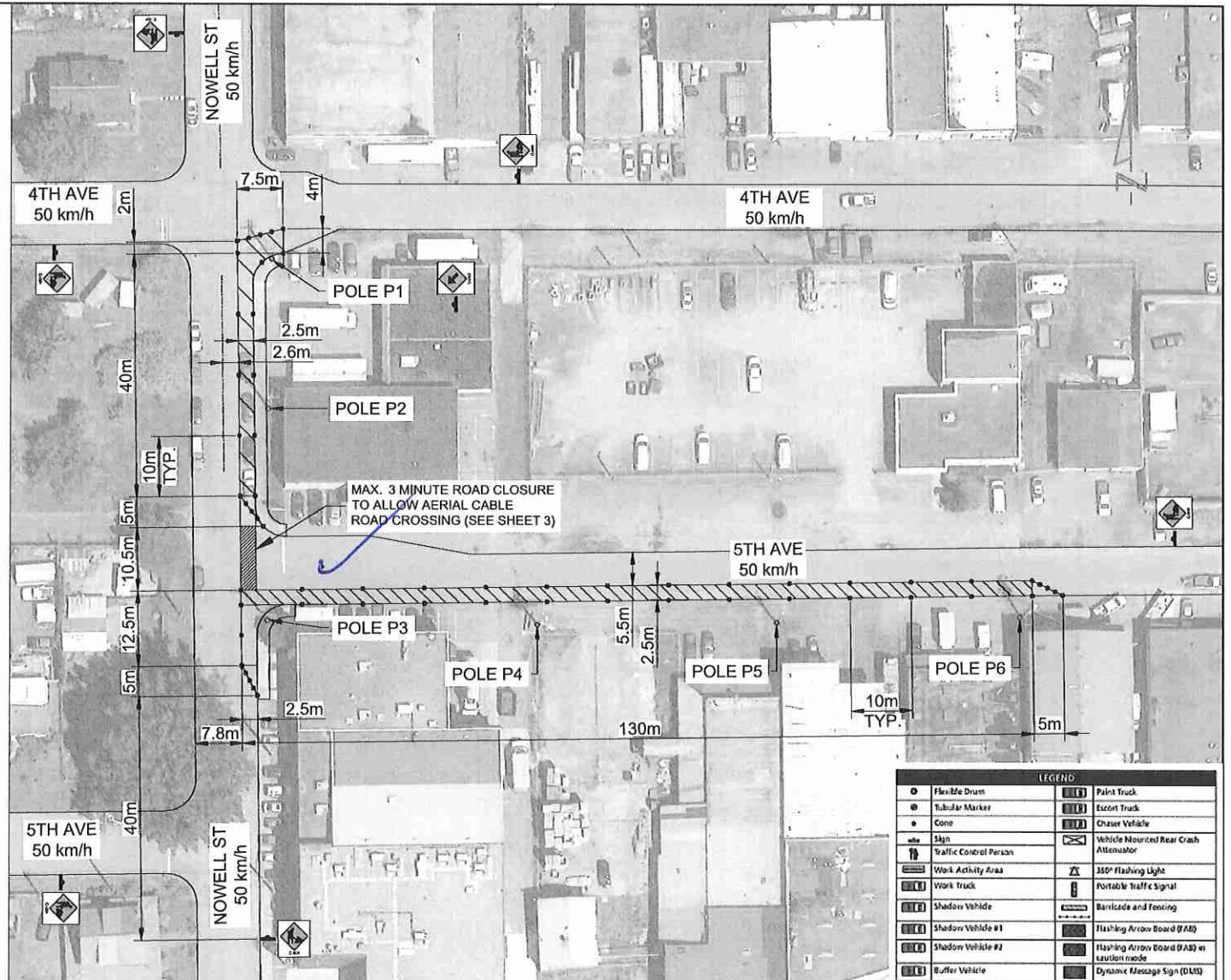
Device Spacing (m)	Regulatory Speed Limit before Work Begins (km/h)										
	≤ 50	60	70	80	90	100	110	120	130	140	150
Construction Sign Spacing	A	40	60	80	100	150	150	200	200		
Buffer Space	B	30	40	60	60	110	140	170	200		
Channelizing Device Spacing for Tapers	C	10	10	15	15	15	15	15	15		
Channelizing Device Spacing on Curves and Tangents	D	10	10	30	30	40	40	40	50		

NOTES:

1. THE WORK REQUIRING THE TRAFFIC CONTROL MEASURE INVOLVES THE PLACING AND SPLICING OF FIBER OPTIC CABLE FROM POLE P1 LOCATED ON THE EAST SIDE OF NOWELL ST (APPROX. 5m SOUTH FROM 4TH AVE) TO POLE P6 LOCATED ON THE SOUTH SIDE OF 5TH AVE (APPROX. 196m EAST FROM NOWELL ST). THE DURATION OF USE OF THIS MEASURE WILL BE UNTIL THE WORK IS COMPLETED.
2. LANE CLOSURES ARE AS NOTED IN THIS LAYOUT.
3. TIMING OF THE WORKS WILL BE FROM 8:30AM TO 4:30 PM.
4. LOCATION OF THE WORK ZONE IS AS INDICATED ON THIS PLAN FOR CONSTRUCTION.
5. A TEMPORARY ROAD CLOSURE OF A MAX. 3 MINUTE DURATION IS REQUIRED TO ACCOMMODATE AERIAL CABLE PLACING. TCPs WILL BE ON SITE TO PROVIDE DIRECTIONS TO AFFECTED TRAFFIC.
6. THE MEASURES SHOWN IN THIS TRAFFIC MANAGEMENT PLAN IS IN ACCORDANCE TO THE "BC TRAFFIC MANAGEMENT MANUAL FOR WORK ON ROADWAYS (2015 INTERIM)". CHANGES TO THIS LAYOUT MAY BE MADE BY THE TRAFFIC CONTROL PERSON IN CHARGE TO REFLECT FIELD CONDITIONS.
7. PRIORITY ACCESS WILL BE GIVEN TO EMERGENCY VEHICLES.
8. ALL DIMENSIONS ARE IN METRES.

CONTACT INFORMATION:

SHANE BELFRY:
778-870-9562



○ Flexible Drum	▬ Paint Truck
● Tubular Marker	▬ Escort Truck
● Cone	▬ Chaser Vehicle
🚚 Sign	▬ Vehicle Mounted Rear Crash Attenuator
👤 Traffic Control Person	▬ 350' Flashing Light
🚚 Work Activity Area	▬ Portable Traffic Signal
🚚 Work Truck	▬ Barricade and Fencing
▬ Shadow Vehicle	▬ Flashing Arrow Board (FAB)
▬ Shadow Vehicle #1	▬ Flashing Arrow Board (FAB) w/ caution mode
▬ Shadow Vehicle #2	▬ Dynamic Message Sign (DMS)
▬ Buffer Vehicle	



BC ONE CALL

CALL BEFORE YOU DIG
1 800-474-6888
VANCOUVER AREA
604-257-1840



CONSTRUCTION	PERMIT
REV. DESCRIPTION	SUBMITTED DATE
REV. DESCRIPTION	PERMIT DATE
REV. DESCRIPTION	PERMIT DATE
REV. DESCRIPTION	APPROVED DATE
REV. DESCRIPTION	APPROVED DATE
REV. DESCRIPTION	AS CONSTRUCTED DATE
REV. DESCRIPTION	COMPLETION DATE

DESIGN	DATE	SCALE
DESIGN	DATE	SCALE
DESIGN	DATE	SCALE
DESIGN	DATE	SCALE
DESIGN	DATE	SCALE

PROPOSED TRAFFIC CONTROL LAYOUT TO ACCOMMODATE TELECOM CABLE PLACING & SPLICING	
ON THE EAST SIDE OF NOWELL ST BETWEEN FROM 4TH AVE AND 5TH AVE, CHILWICK, BC	SYSTEM NAME: 2676312
	SHEET 2

TABLE A – TAPER LENGTHS

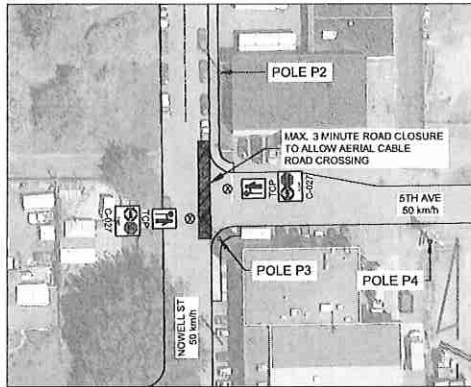
Taper Types (m)	Regulatory Speed Limit before Work Begins (km/h)								
	≤ 50	60	70	80	90	100	110	120	
Merge Taper Length	1/4	35	55	160	190	210	230	250	280
Lane Shift Taper Length	1/4	30	50	80	100	110	120	130	140
Downstream Taper Length	1/4	30	30	30	30	30	30	30	30
TCR, Signal, and Shoulder Taper Length (min. 5 devices)	1/4	5	8	15	15	15	15	15	15
Minimum Tangent Length between Tapers	1/4	30	60	160	190	210	230	250	280
Run-in Length on Centreline	1/4	40	50	60	60	70	80	90	100

TABLE B – DEVICE SPACING LENGTHS

Device Spacing (m)	Regulatory Speed Limit before Work Begins (km/h)								
	≤ 50	60	70	80	90	100	110	120	
Construction Sign Spacing	A	40	60	80	100	150	150	200	200
Buffer Space	B	30	40	60	80	110	140	170	200
Channelizing Device Spacing for Tapers	C	10	10	15	15	15	15	15	15
Channelizing Device Spacing on Curves and Tangents	D	10	10	30	30	40	40	40	50

LEGEND

	Flexible Drum		Paint Truck
	Tubular Marker		Escort Truck
	Cone		Chaser Vehicle
	Sign		Vehicle Mounted Rear Crash Attenuator
	Traffic Control Person		350° Flashing Light
	Work Activity Area		Portable Traffic Signal
	Work Truck		Barricade and Fencing
	Shadow Vehicle		Flashing Arrow Board (FAB)
	Shadow Vehicle #1		Flashing Arrow Board (FAB) in caution mode
	Shadow Vehicle #2		Dynamic Message Sign (DMS)
	Buffer Vehicle		



ROAD CROSSING FROM P2 TO P3

CONTACT INFORMATION:

SHANE BELFRY:
778-870-9562

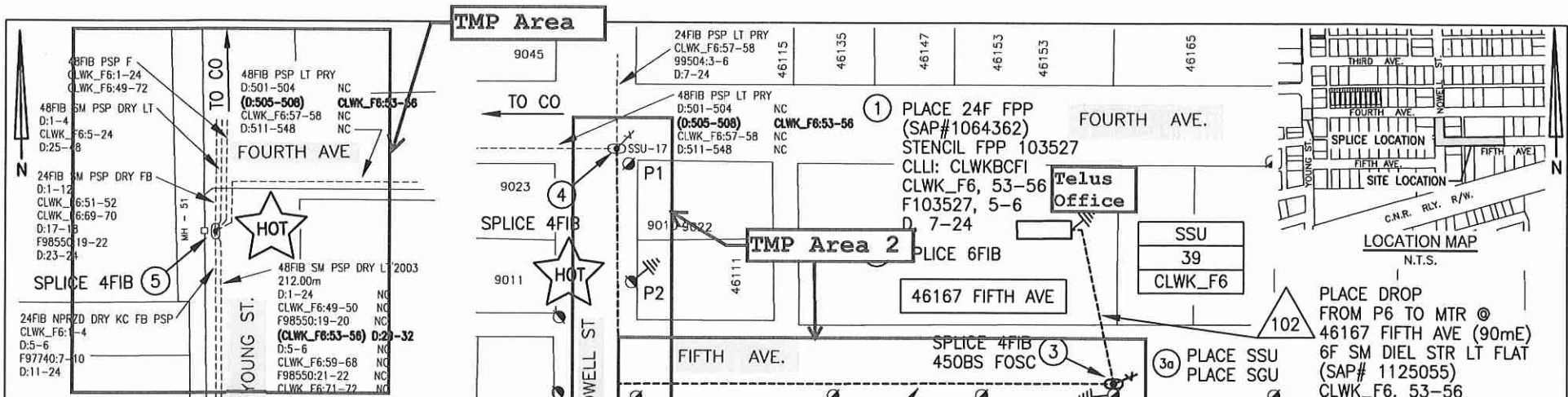


BC ONE CALL

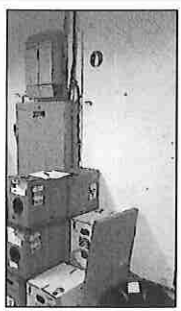
CALL BEFORE YOU DIG
1 800-474-6888
VANCOUVER AREA
604-257-1849



CONSTRUCTION	PERMIT	DESIGN D.	DR. DE.	THE WORK PROVIDED ON THIS DRAWING SHALL BE THE PROPERTY OF TELUS	
REV. DESCRIPTION	ISSUED DATE	04/26/14	SCALE: NTS	LAYOUTS FOR AERIAL CABLE ROAD CROSSINGS	
REV. DESCRIPTION	FE-SUB DATE		DATE: 01/FEB/19		
REV. DESCRIPTION	RE-SUB DATE		ASSOCIATED DRAWINGS		
REV. DESCRIPTION	APPROVED	1.		SYSTEM NAME:	
REV. DESCRIPTION	DATE	2.		2576312	
REV. DESCRIPTION	AS CONSTRUCTED DATE	3.		SHEET 3	
REV. DESCRIPTION	CONTRACTOR	REF:			



*** FLAGGING REQUIRED FOR PLACING ***
 *** AND MANHOLE SPLICING ***



DEMARCATIOM ROOM
N.T.S.



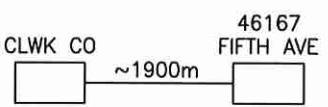
CLLI 'CLWKFI01R01'
IN STORAGE ROOM
N.T.S.

*** NEW PLYWOOD ***
 ** REQUIRED **

SITE CONTACT
 ROGER PERLOTTO
 O: 604-695-3003

- (556) ACCEPTANCE BI-DIRECTIONAL OTDR (4FIB)
- (557) ACCEPTANCE BI-DIRECTIONAL PWRMTR (4FIB)
- (558) ACCEPTANCE UNI-DIRECTIONAL OTDR (2FIB)
- (559) ACCEPTANCE UNI-DIRECTIONAL VLF RUBY RED (2FIB)

Telus onsite contact
 Eric Nordgren 604 795 0123



WARNING
 TELUS FIBRE OPTIC CABLE
 24F PSP LT2 PRY
 CLWK_F6
 NW# 2678012
DO NOT TOUCH

BLACK PLASTIC AERIAL TAGS: 10 REQUIRED

WARNING
 TELUS FIBRE OPTIC CABLE
 6F SM DIEL STR LT FLAT
 CLWK_F6
 FPP 103527 @ 46167 FIFTH AVE
 NW# 2678012
DO NOT TOUCH

BLACK PLASTIC AERIAL TAGS: 4 REQUIRED

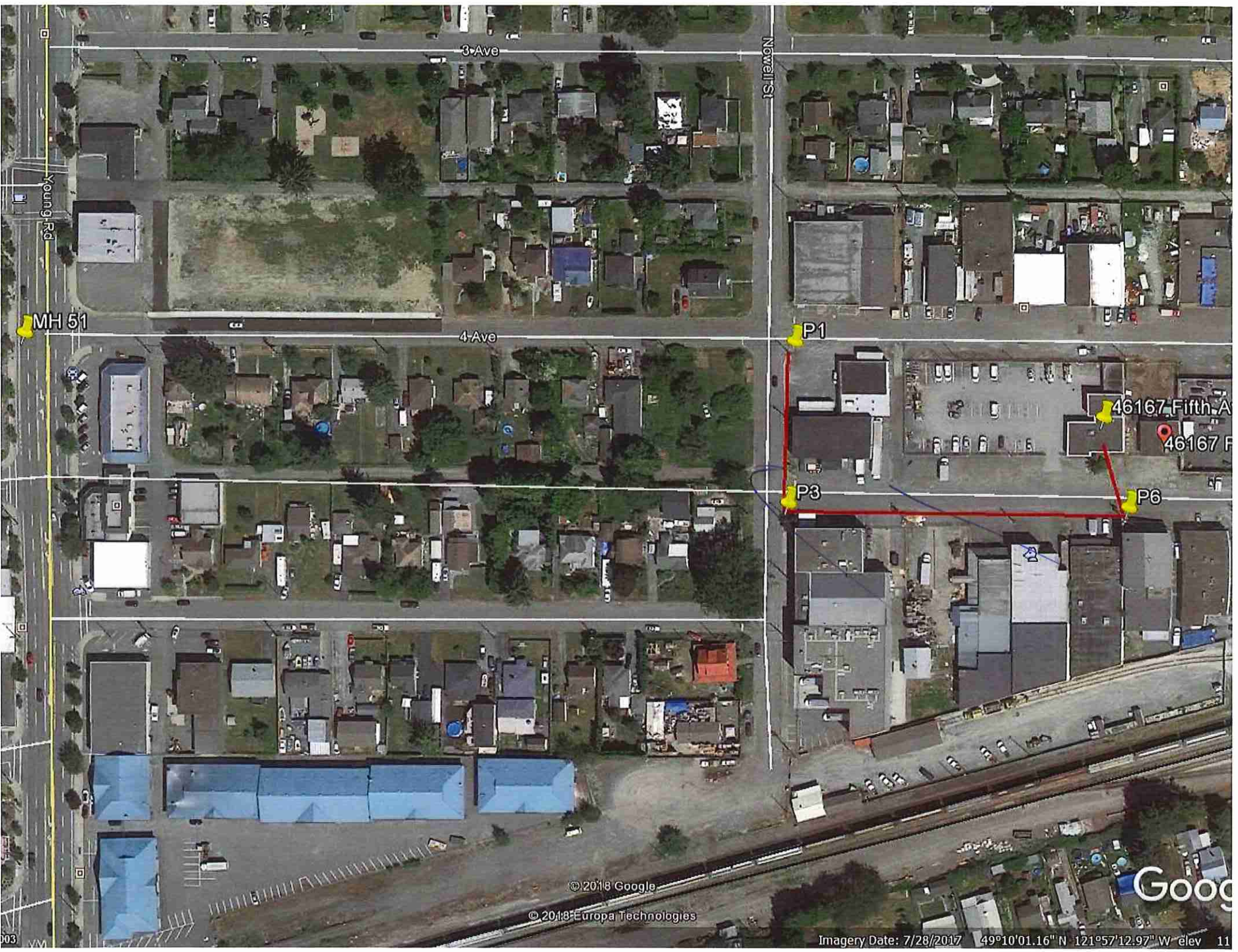
FIBER TAG DETAILS
 N.T.S.

24F PSP LT2 PRY (SAP# 2218545)	240m
6F SM DIEL STR LT FLAT (SAP# 1125055)	90m
SSU SPLICE SENSOR UNIT (SAP# 1068482)	1
SGU SHEATH GROUND UNIT (SAP# 1068425)	1
TYCO 450BS FOSC (SAP# 1121026)	1
450BS SPLICE TRAYS (SAP# 1900571)	2
450BS EXTERNAL GROUNDING KIT (SAP# 1242278)	1
450BS 4-DROP SEALING KIT (SAP# 1162464)	1
BLACK AERIAL FIBER TAG (SAP# 5120507)	14
24F FIBER PATCH PANEL (SAP# 1064362)	2
5m SM SC/UPC PIGTAILS (SAP# 1076506)	6
24F FPP BULKHEAD PLATE (SAP# 1078428)	1
6F ADAPTER STRIP SC (SAP# 1078431)	1
12F SPLICE TRAY (SAP# 1025353)	1
12F SPLICE TRAY COVER (SAP# 1022006)	1

CONSTRUCTION NOTE:
 - ONLY RELEVANT CABLES AND STRUCTURES SHOWN FOR NW#2678012
 - BONDING AND GROUNDING AS REQUIRED

FOX ORDER: 2904776

CONSTRUCTION		PERMIT		DESIGN: SEAN HANDO	DR: SEAN HANDO	THE WORKS PROPOSED ON THIS DRAWING SHALL AT ALL TIMES REMAIN THE PROPERTY OF TELUS		
REV.	DESCRIPTION:	SUBMITTED DATE:	PH: 604-626-9971	SCALE: AS SHOWN	<div style="display: flex; align-items: center;"> <div style="border: 1px solid black; padding: 5px; margin-right: 10px;">Telus Office</div> <div style="text-align: center;"> <p>PROPOSED CONSTRUCTION TO 46167 FIFTH AVENUE CHILLIWACK, BC</p> </div> </div>			
REV.	DESCRIPTION:	RE-SUB DATE:	EMAIL: shando@encepta.net	DATE: DEC 12, 2017				
REV.	DESCRIPTION:	RE-SUB DATE:	ASSOCIATED DRAWINGS					
REV.	DESCRIPTION:	APPROVED:	TELLUS: 2610085C, 2272569C	C.O. CODE: 2678012C				SYSTEM NAME: 2678012C1-1
REV.	DESCRIPTION:	DATE:		CLWK SHEET 1 OF 1				
REV.	DESCRIPTION:	AS CONSTRUCTED DATE:						
REV.	DESCRIPTION:	CONTRACTOR:	REF: CLWK					



3-Ave

Norrell St

Young Rd

MH 51

4-Ave

P1

46167 Fifth Ave

46167 F

P3

P6

© 2018 Google

© 2018 Europa Technologies

Goog

Imagery Date: 7/28/2017 49°10'01.16" N 121°57'12.97" W elev 11

003